



Frederick County Board of Health

May 15, 2025

- I. **Call to Order (6pm)** – Dr. Barbara Brookmyer, Health Officer for Frederick County
- II. **Public Comments (6:00p.m. – 6:15 p.m. p.m.)**
 - I. **Members of the public will be given three (3) minutes to provide comments** - available to attendees in the room.
- III. **Approval of Minutes:** [10/30/2024](#)
- IV. **Updates from the Health Department:**
 - I. **Maternal and Infant Health in Frederick County**
 - II. **New Community Health Needs Assessment Cycle**
 - III. **Brief report on the Maryland Commission on Public Health**
 - IV. **Current Topics**
- V. **Old Business:**
 - I. **Update on Liaison terms and application process for new**
- VI. **New Business**
 - I. **Introduce Environmental Health Cost of Service Adjustment**
- VII. **Upcoming Meetings:** July 30, 2025; October 22, 2025
- VIII. **Adjourn**



Frederick County, Maryland

Public Comment



Public Comment



The Frederick County Board of Health welcomes and encourages public comment.



Public comment is open to members of the public who are present in the room. Individual providing public comment have up to 3 minutes and will be asked to complete comments when the buzzer sounds. A total of 15 minutes is allocated for public comment on today's agenda.



Public comment is not intended to be a question-and-answer platform with the Board members. Generally, Board members will not respond to comments made.



Members of the public wishing to share additional comments with the committee may do so by emailing boardofhealth@frederickcountymd.gov.



Approval of Minutes



Public Health
Prevent. Promote. Protect.

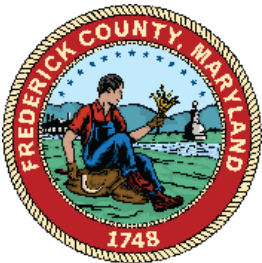
Frederick County Health Department

The State of Maternal Child Health In Frederick County, MD

Miriam Dobson, DNP, RN, CPH

Director of Community Health Services Division

Frederick County Health Department



Frederick County, MD



Population

- 299,317

Birthing population

- 5.3 % Fertility rate

Births

- 3,102

Maternal Health Disparities



America's high maternal mortality rates:
Racial and ethnic disparities persist



Deaths per 100,000 births

Total

16.7

Black

40.8

American
Indian/Alaska Native

29.7

Asian/Pacific
Islander

13.3

White

12.7

Hispanic

11.5

Pregnancy-related
mortality ratios are

3.2 times

higher for
black women
&

2.3 times

higher for
American Indian/
Alaska Native
than for white
women

CDC (2019) | For full citation go to www.nihcm.org

Infant Health in Maryland

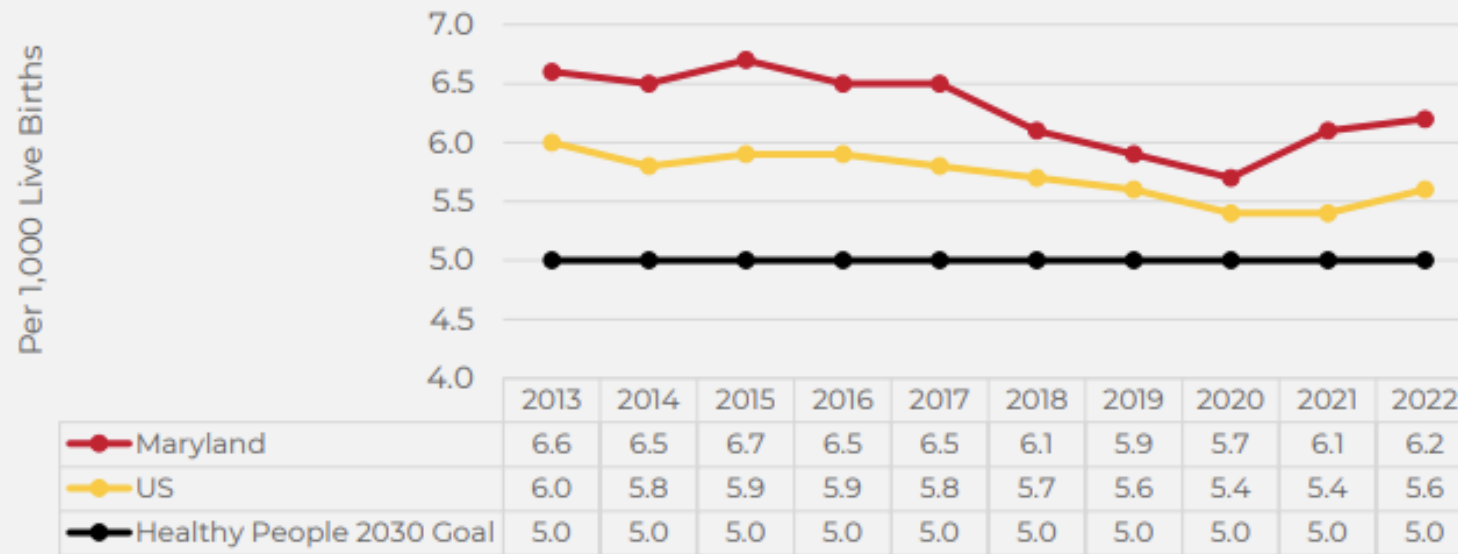
STATE SUMMARY FOR MARYLAND ✓



- In 2023, **1 in 10 babies** (10.2% of live births) was born preterm in Maryland.
- In 2023, **1 in 12 babies** (8.6% of live births) was low birthweight in Maryland.
- In Maryland in 2022, 415 infants died before reaching their first birthday, an infant mortality rate of **6.0 per 1,000 live births**.
- In Maryland in 2023, **74.5% of infants** were born to women receiving adequate/adequate plus prenatal care.
- In Maryland in 2023, **35.0% of live births** were Cesarean deliveries.
- In 2021, about **1 in 14 women** of childbearing age (7.1%) was uninsured in Maryland.

Maryland Infant Deaths

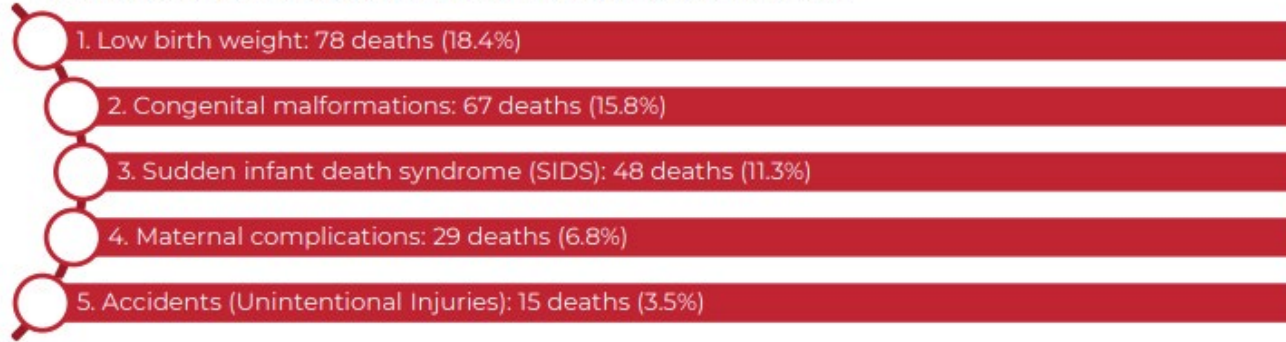
Figure 5. Comparison of infant mortality rates in Maryland and the U.S., 2013-2022



Maryland's overall infant mortality rate has historically been higher than the national rate, in part due to the higher proportion of non-Hispanic black Maryland residents.

Infant & Death - Maryland

The five leading causes of infant death in Maryland in 2022 were:



In Table 2, the number and percentage of deaths in 2020 are shown by jurisdiction of residence of the child at the time of death. Baltimore City had the highest number of child fatalities reviewed (21.3 percent), followed by Baltimore County (16.9 percent).

Table 2. Unexpected Child Deaths by Jurisdiction of Residence, Maryland, 2020*

	Number	Percent
Baltimore City	34	21.3
Baltimore	27	16.9
Prince George's	14	8.8
Anne Arundel	14	8.8
Montgomery	14	8.8
Howard	12	7.5
Carroll	5	3.1
Charles	5	3.1
Frederick	5	3.1
Washington	5	3.1
Harford	4	2.5
St. Mary's	4	2.5
Wicomico	4	2.5
Calvert	3	1.9
Allegany	2	1.3
Cecil	2	1.3
Kent	2	1.3
Dorchester	1	0.6
Queen Anne's	1	0.6
Somerset	1	0.6
Talbot	1	0.6
Total	160	100.0

Source: CDCRCS, as of 08/02/2022.

*Caroline, Garrett, and Worcester counties had no child deaths and are not listed.

Sleep Related Infant Death – Maryland and Frederick

September 2021

Sudden Unexpected Infant Deaths

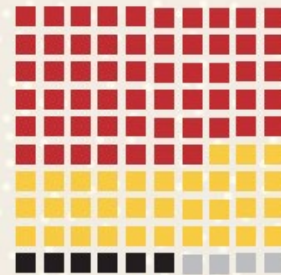
Maryland, 2015-2019



264

SUID cases occurred between 2015 and 2019 in Maryland and were reviewed by the State Child Fatality Review (CFR) Team. During this time period, Maryland SUID cases occurred at a rate of **73.5** deaths per 100,000 live births, while the national SUID rate was **91.7**. Data shown below are from the 2015-2019 period, unless otherwise noted.

Racial and ethnic disparities continue to be seen in SUID cases, in Maryland and across the US.



57%
of infants were
Non-Hispanic Black.

33%
of infants were
Non-Hispanic White.

6% Hispanic, **4%** Other.

n=264 cases in Maryland

SUID rates per 100,000 live births by race/ethnicity

	Maryland	National, 2014-2018*
Non-Hispanic Other	38.3	55.8
Non-Hispanic Black	131.2	186.9
Non-Hispanic White	55.7	84.9
Hispanic	26.2	54.1

*National SUID rates by race/ethnicity for 2015-2019 not yet available.

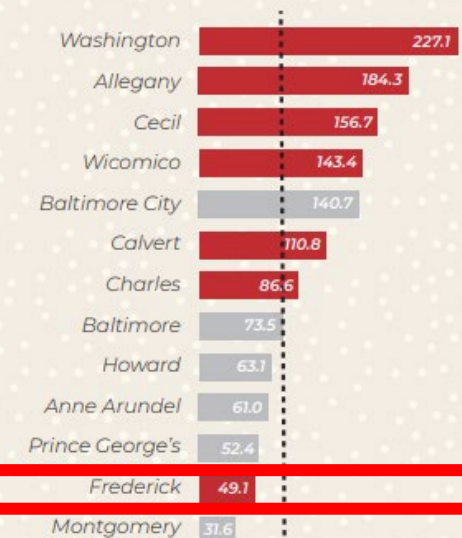
Recommendations from the CFR Program:

- Increase community awareness of SUID associated risk factors and prevention, especially in jurisdictions with highest SUID rates and disproportionately-affected communities.
- Continue to review and report SUID cases to the National Child Death Review Case Reporting System to improve surveillance of infant deaths.
- Stay updated with guidance from NIH and contact your Maryland Department of Health for resources.

In Maryland, high rates of SUID occurred in some rural and urban jurisdictions.

33% of cases occurred in rural jurisdictions.

SUID rates per 100,000 live births by jurisdiction*



MD average (73.5)

Urban Rural

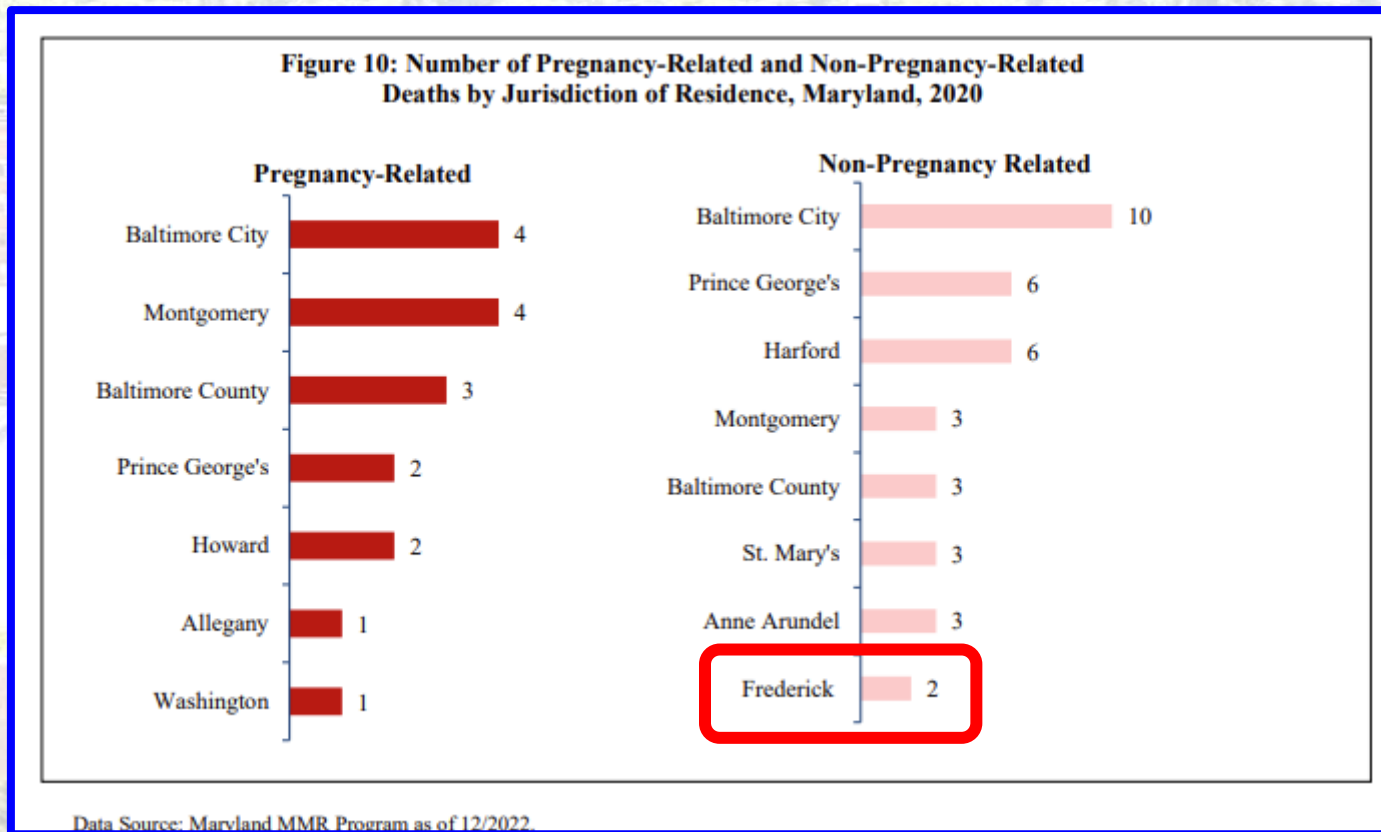
*Based on Maryland Vital Statistics Administration live birth data. Counties not displayed here had fewer than five SUID cases in this period.

Frederick's Infant Mortality

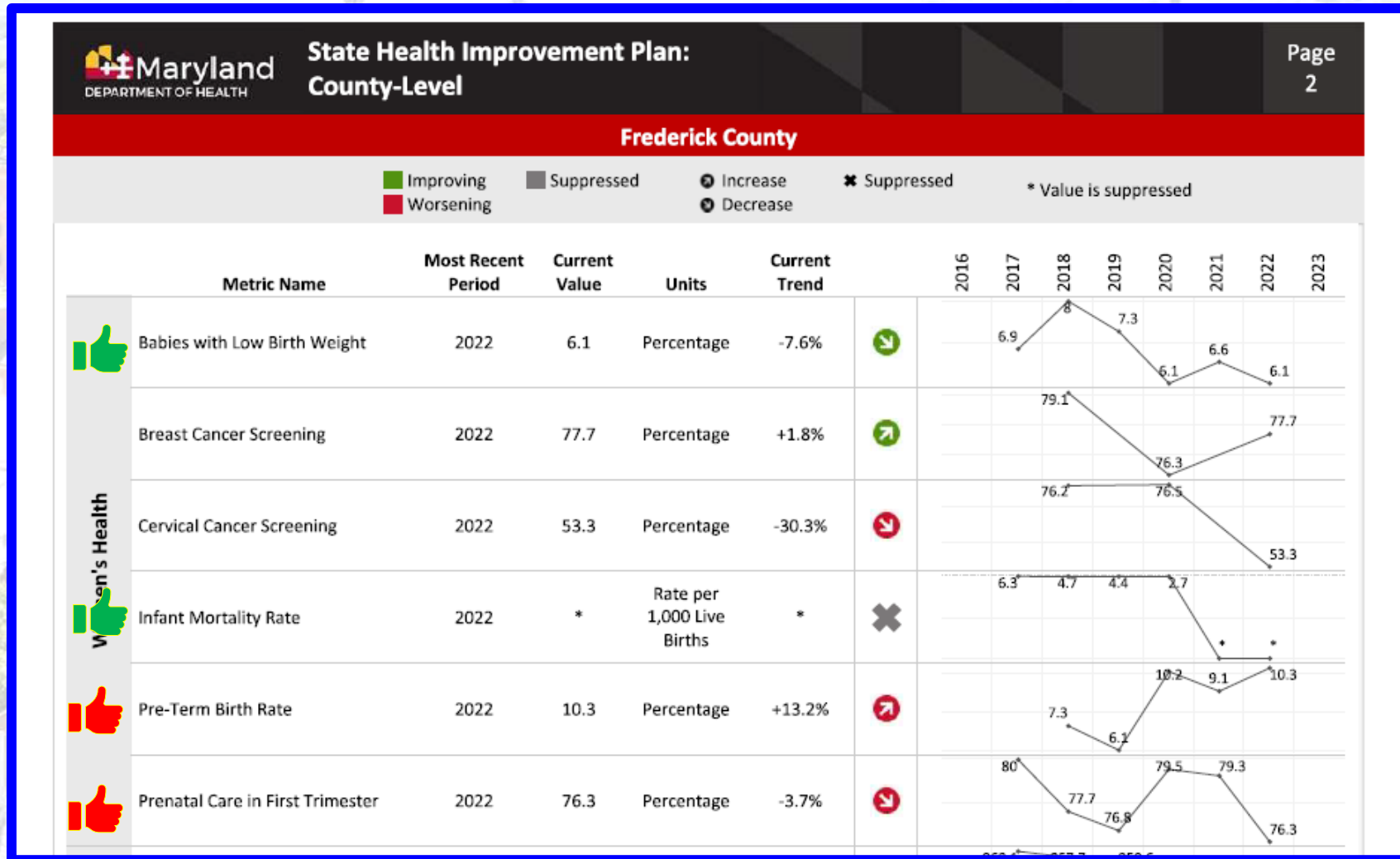
TABLE 1. INFANT DEATHS AND AVERAGE INFANT MORTALITY RATE PER FIVE YEAR INTERVAL BY REGION AND POLITICAL SUBDIVISION, MARYLAND, 2022, 2013-2017 AND 2018-2022

	Number of infant deaths			Average infant mortality rate*		
	2022	2013-2017	2018-2022	2013-2017	2018-2022	
Maryland	424	2381	2076	6.5	6.0	***
Northwest Area	29	163	148	6.0	5.3	
Garrett	1	14	6	**	**	
Allegany	6	25	30	7.6	9.6	
Washington	12	64	52	7.5	6.3	
Frederick	10	60	60	4.3	4.0	

Frederick's Maternal Mortality



Maryland State Health Improvement Plan



Maryland State Health Improvement Plan



Asthma-Related ED Visits

Yes

2023

6.9

5.3 by
2026

Rate per
10,000

+4.5%



What's missing?

Infant Mortality Disparity Data

- Usually, in Frederick, a black infant does not live to see their first birthday at 2-3 times higher incidence.
- This mirrors Maryland and U.S. Black/ White Disparity data

What has been done?

- Black Birthing persons listening session December 2021
- The Black Birthing Study – Danielle Haskin
- Black Health Birthing Improvement Strategic Plan – Danielle Haskin

Supports to improve Maternal & Infant Health

Family Connects Program

Available to all newborns in Frederick

A free at-home newborn visit with an experienced nurse

An evidence-based program

<https://www.frederickhealth.org/services/birth-place/at-home-newborn-visit/>



Supports to improve Maternal & Infant Health

Healthy Families Frederick

Available to all new mothers in Frederick

A free at-home newborn visit with trained home visitor

An evidence-based program

Prenatal to 5 years postpartum

Must be a Frederick County Resident

<https://fcmha.org/how-we-help/healthy-families/>

Supports to improve Maternal & Infant Health

The Frederick County Infants and Toddlers Program Mission

To provide early intervention services that support young children with developmental needs and their families.

Vision

All children receive individualized services and supports so they enter school ready to learn and succeed.

Purpose

To enable young children to be active and successful participants in a variety of settings including their homes, childcare, preschool and community through:

1. Positive social-emotional skills (including social relationships);
2. Acquisition and use of knowledge and skills (including early language, communication and early literacy); and
3. Use of appropriate behaviors to meet their needs

Referrals are also being accepted via fax at 301-600-3280 or call 301-600-1612

Supports to improve Maternal & Infant Health

Frederick County Health Department Program

Maternal and Child Health Program

Childbirth Education – Certified Instructor

Doula education and support to reduce maternal and infant disparities

Lead and Asthma reduction program – Education, home visits and durable goods

Child Safety

Available to all Frederick County at no cost

Works with the Equity Office to reduce disparities

Health.FrederickCountyMD.gov/MCH

Supports to improve Maternal & Infant Health

Frederick County Health Department Program

Maternal and Child Health Program - Continued

The Women, Infants and Children (WIC) Program

- Provides robust nutrition education
- Breastfeeding support
- Nutrition supplementation through electronics benefits transfer

Serves all Frederick Residents

Must be income eligible, expecting, recently experienced a pregnancy loss and this program is for income eligible children under age 5 years

Call **301-600-2507** to speak with a WIC specialist today.

Health.FrederickCountyMD.gov/WIC

Frederick County, MD



- Healthy Families Frederick
- Special Delivery
- The WIC Program
- Asian American Center of Frederick

- WIC Program

- Healthy Families Frederick
- Family Connects
- Special Delivery
- The WIC Program
- Infants & Toddlers

- Healthy Families Frederick
- Family Connects
- Safe Kids Frederick
- The WIC Program
- Infants & Toddlers

- Healthy Families Frederick
- Safe Kids Frederick
- The WIC Program

- The Lead and Asthma Program
- Safe Kids Frederick County

Frederick County, MD



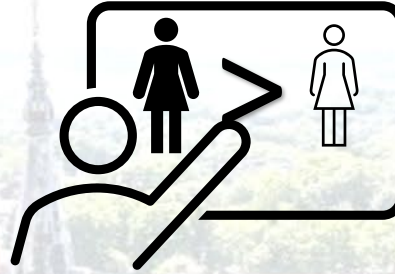
GAPS

Awareness of Services and a Comprehensive Guide
available to all Services and Programs serving:

Pregnant and Parenting persons and their children

Frederick County, MD

DISPARITY



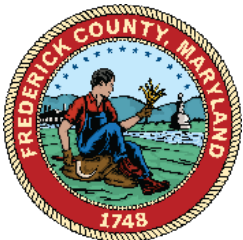
As long as there are Health Disparities there will be Continued Dialogue:

- **The Black Equity Coalition**
- **The Black Maternal Health Strategic Plan**
- **The Maternal Child Health Collaborative & Child Fatality Review Team**
- **The Family Connects Partner Council**
- **IECC – Intra Agency Early Childhood Committee of the L.M.B.**
- **The Coalition for a Healthier Frederick**
- **Substance Exposed Newborns Coalition**

Miriam Dobson, DNP, RN, CPH
Director of Community Health Services Division

350 Montevue Lane
Frederick, MD 21702
301-600-1733

Health.frederickcountymd.gov





Additional MCH Work
by
Danielle Haskin, MSPH
Director of Equity Office



Background: Phase 1 and Phase 2 Recap

Phase 1 Health Disparity Study

- Community Advisory Board (CAB)
- Community assets and protective factors
- Drivers of poor outcomes

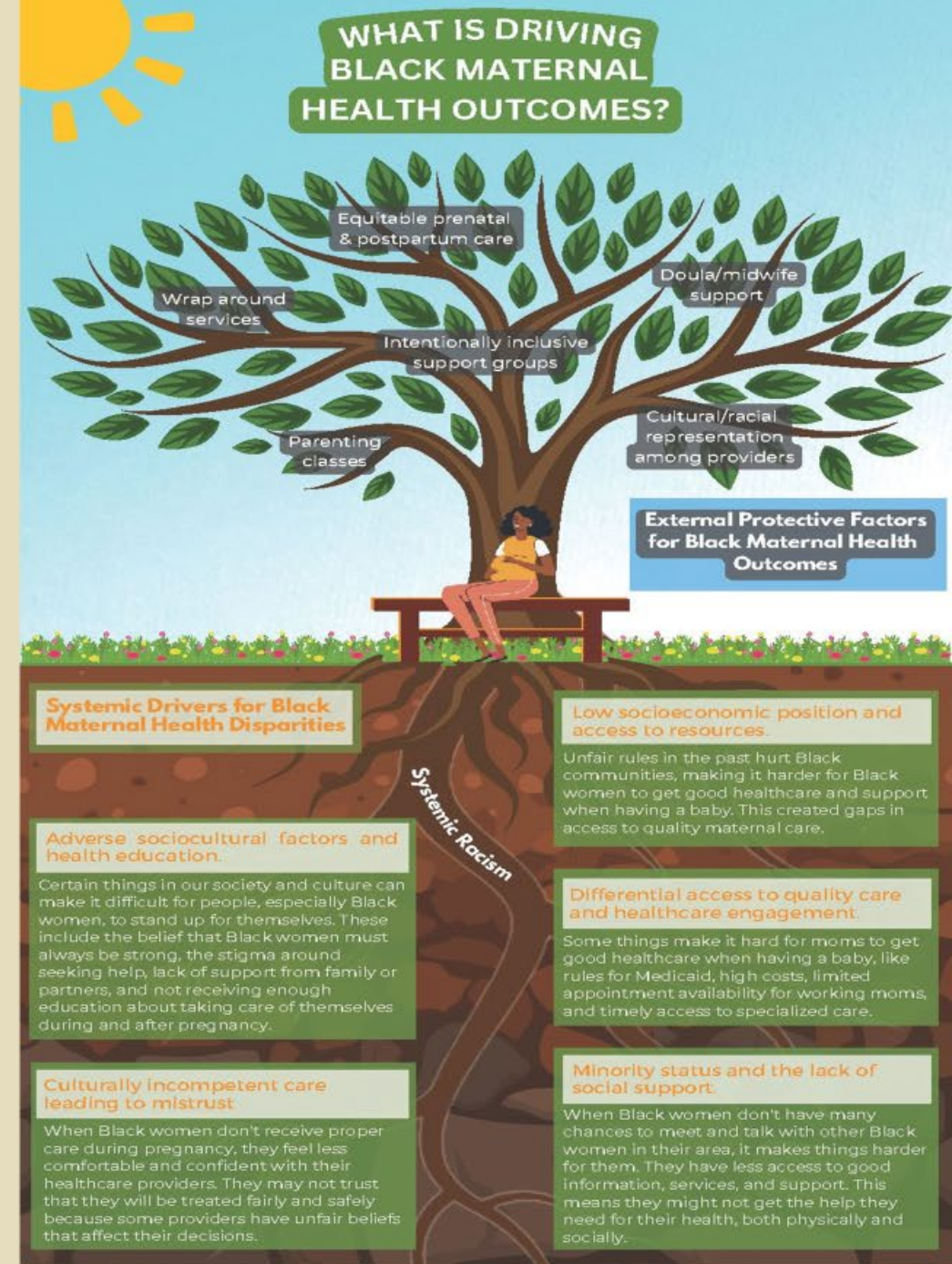
Phase 2 Strategic Community Health Improvement Plan (CHIP)

- CAB collaboration with CHIP Committee
- Strategies to address identified drivers
- Action & accountability monitoring plans

Phase 3 Implementation

- Benchmarks and targets
- Community feedback
- Evaluation & reporting

Black maternal health is a critical public health issue in Frederick County, MD, where Black women, birthing people, and children, face higher risks of adverse maternal outcomes. This strategic plan aims to improve Black maternal health outcomes and reduce disparities. The timeline is 2024 to 2028 and includes coordinated efforts in areas like access to care, social determinants of health, and community engagement.



High Value Strategies and Key Objectives

**WAP = Maryland Women's Action Plan

Strategy 1: Expand anti-discrimination and anti-bias training requirements beyond obstetrician gynecologists (OB-GYNs) providers to include OB-GYN practice staff and relevant perinatal care services and supports providers – WAP Goal 2 and 4

- **Objective 1:** Raise awareness and expand anti-discrimination and anti-bias training to perinatal care practitioners, administrative staff, support staff, and social services providers.
- **Objective 2:** In collaboration with Black mothers, identify and implement a tool to quantify perinatal care racism (e.g., patient-reported experience measure of Obstetric Racism® (PREM-OB). Goals 2 and 4
- **Objective 3:** Administer the tool and evaluate changes in reported experiences of racism while receiving perinatal care services and

Strategy 2: Expand capacity of existing workforce to connect Black birthing people to resources and services - WAP Goal 6

- **Objective 1:** Expand the number of trained community health workers and doulas.
- **Objective 2:** Provide ongoing supports available to community health workers and doulas to expand their capacity to provide services and supports (including health information) to Black birthing persons.
- **Objective 3:** Compile tools to help track and improve Black maternal outcomes.
- **Objective 4:** Monitor maternal health outcomes in targeted programs.

Strategy 3: Ensure the CAB and CHIP Committee remain involved and supported in the implementation and ongoing monitoring of the Black Maternal Health Strategic CHIP in a transparent, sustainable manner. - WAP Goal 1 - 6

- **Objective 1:** Through a collaborative process, determine the next phase of the CHIP Committee
- **Objective 2:** Formalize the CAB to inform ongoing health disparity strategies.

JOIN THE INITIATIVE YOUR INVOLVEMENT MATTERS



Black Maternal Health Let's work
together!





Update on Community Health Needs Assessment

by

Rissah Watkins, MPH, CPH

Director of Planning, Assessment and Communication

The MAPP Process Prioritizes Community Input

Community Survey

- Data collected July 9th through August 1st, 2024
- 2,441 responses

Focus groups

- Populations from survey who weren't thriving
- 5 groups held September 2024

Partner Assessment

- 28 community partners

Secondary data

- 20+ sources and 40+ different health status and outcomes

Community Health Needs Assessment Public Input Session

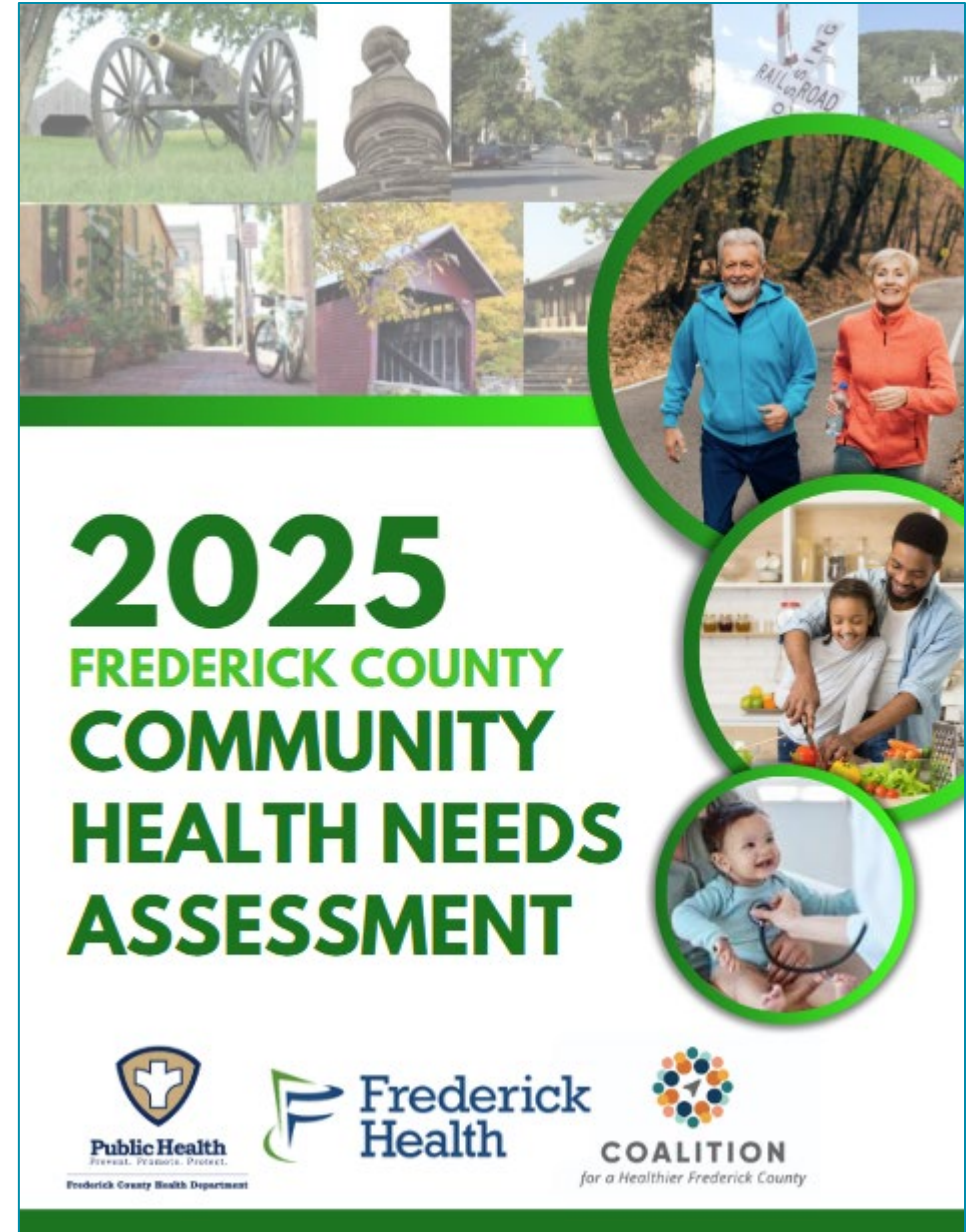




Final Report

- Draft to community in March for public comment
- Final version in May 2025

Health.FrederickCountyMD.gov/CHNA2025



Priorities for the 2025-2028 Cycle



Food & Nutrition
Lack of Access to
Affordable Healthy
Food



Mental Health:
Lack of Awareness of
Accessibility of Resources
Stigma Around Mental
Health



Housing
Inadequate
Affordable Housing
Supply



Racial Equity & Justice
Institutional and
Systemic Racism



Get involved!

As a passionate community member, you are encouraged to join one of the 2025 - 2028 LHIP Workgroups:

- **Food and Nutrition:** Lack of Access to Affordable Healthy Food
- **Housing:** Inadequate Affordable Housing Supply
- **Mental Health:** Lack of Awareness of Accessibility of Mental Health Resources and Stigma
- **Racial Equity and Justice:** Institutional and Systemic Racism

<https://healthierfrederick.org/priorities/join-a-workgroup>



Other Recent Reports

Frederick County Black Maternal Health Strategic Plan

The report based on the findings will be available on their website in 2025.

<https://health.frederickcountymd.gov/Equity>

Immigrant Youth Behavioral Health Project, May 2024

<https://associationofnigeriansinfrederick.com/reports/>

▼ Where we're at now

▶ Background

▶ Process

We are excited to announce that the Black Maternal Health Strategic Plan is now being put into action, led by our community workgroups. These groups, made up of dedicated local community members, are helping guide the plan's development and focus on using real-life experiences and input from the community at every step.

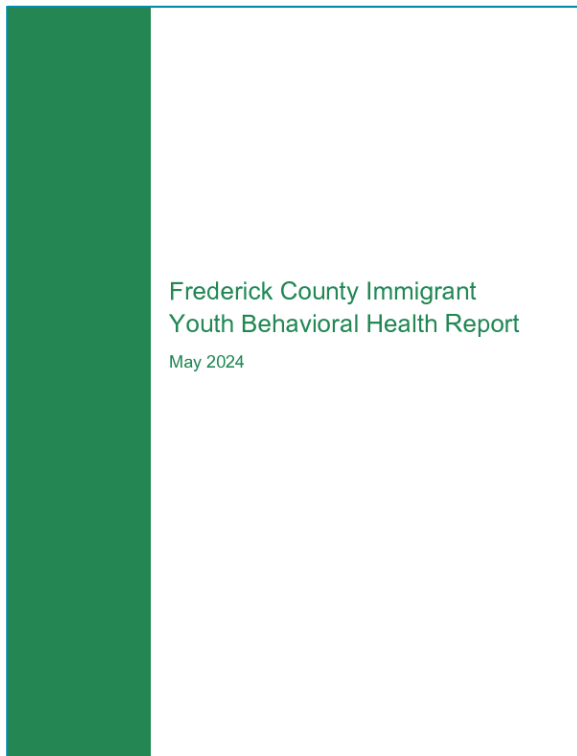
The Steering Committee, which includes the Community Advisory Board (CAB) and the Community Health Improvement Plan (CHIP) committee who have been involved from the beginning, plays an important role in this process. Their work helps make sure that the voices and needs of the community continue to shape what we do.

Join us in shaping the future of Black maternal health in our community! The Frederick County Health Departments Black maternal health initiative is continuing and workgroups are being formed. We would love community members to join us, your voice and expertise can make a lasting impact on improving maternal health outcomes. Let's work together for change!

Join a workgroup!

Review Summary Report

Provide Feedback





Brief report on the
Maryland Commission on Public Health
by
Dr. Barbara Brookmyer



Commission on Public Health - Charge

Maryland's Commission on Public Health is tasked with

- ✓ assessing the *foundational public health capabilities* of state and local health departments in Maryland and
- ✓ analyzing the state's ability to respond to major public health challenges.

The Commission will make recommendations for reform in several areas, including:

- the organization of [state and local] public health departments
- how the departments use information technology, exchange information with other organizations, and collect and report data
- the people, funding, and contract processes departments need to do their work
- how the departments communicate with and engage community members and groups

Final Report – anticipated distribution date = October 2025



CoPH Required Workgroups

(I) FUNDING;

(II) GOVERNANCE AND ORGANIZATIONAL CAPABILITIES;

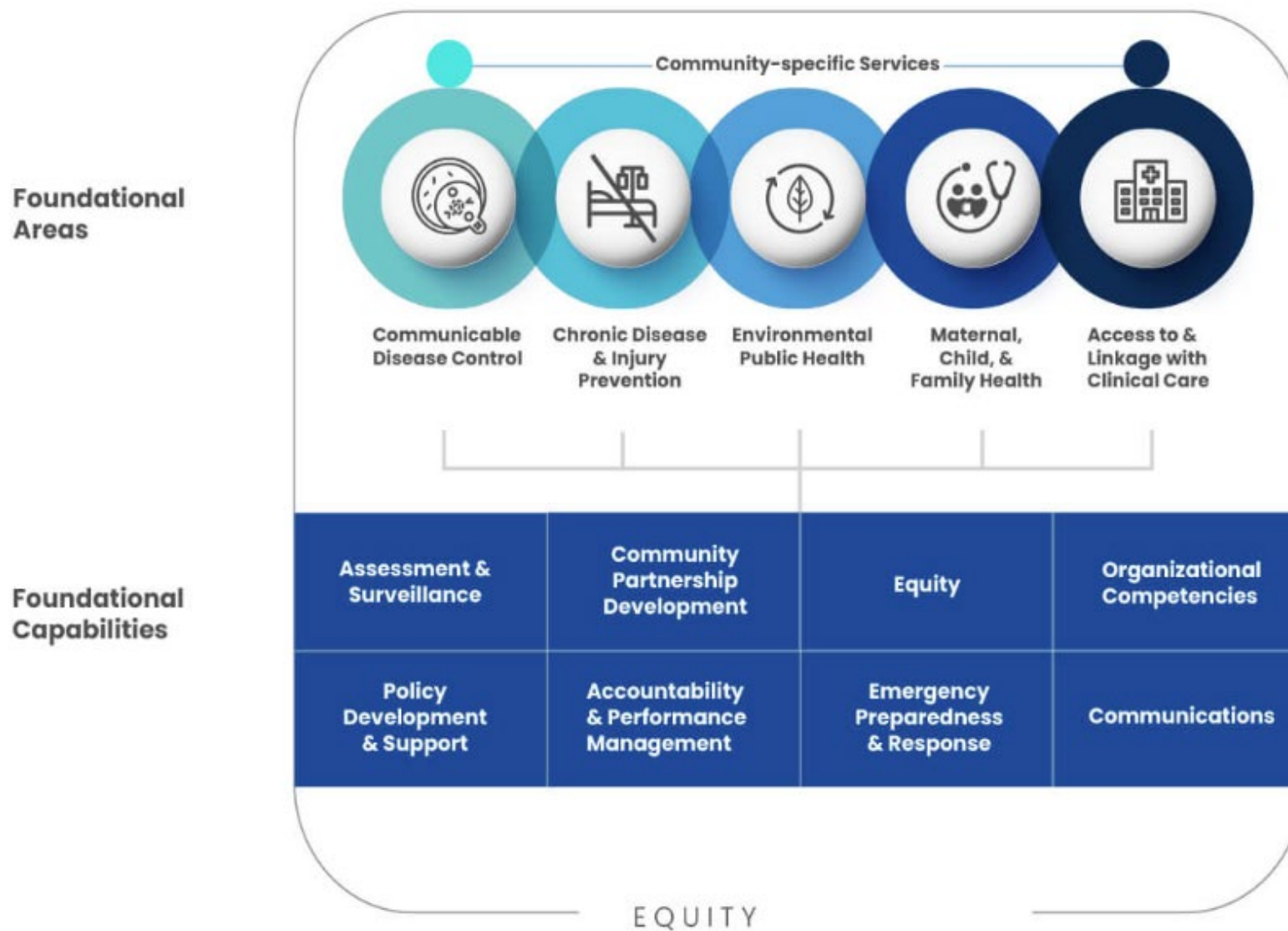
(III) WORKFORCE;

(IV) DATA AND INFORMATION TECHNOLOGY; AND

(V) COMMUNICATION AND PUBLIC ENGAGEMENT.



Foundational Public Health Services





CoPH - Communications

December 2024 – Interim Report - [Maryland-CoPH-Interim-Report-2024-12.pdf](#)

Website:

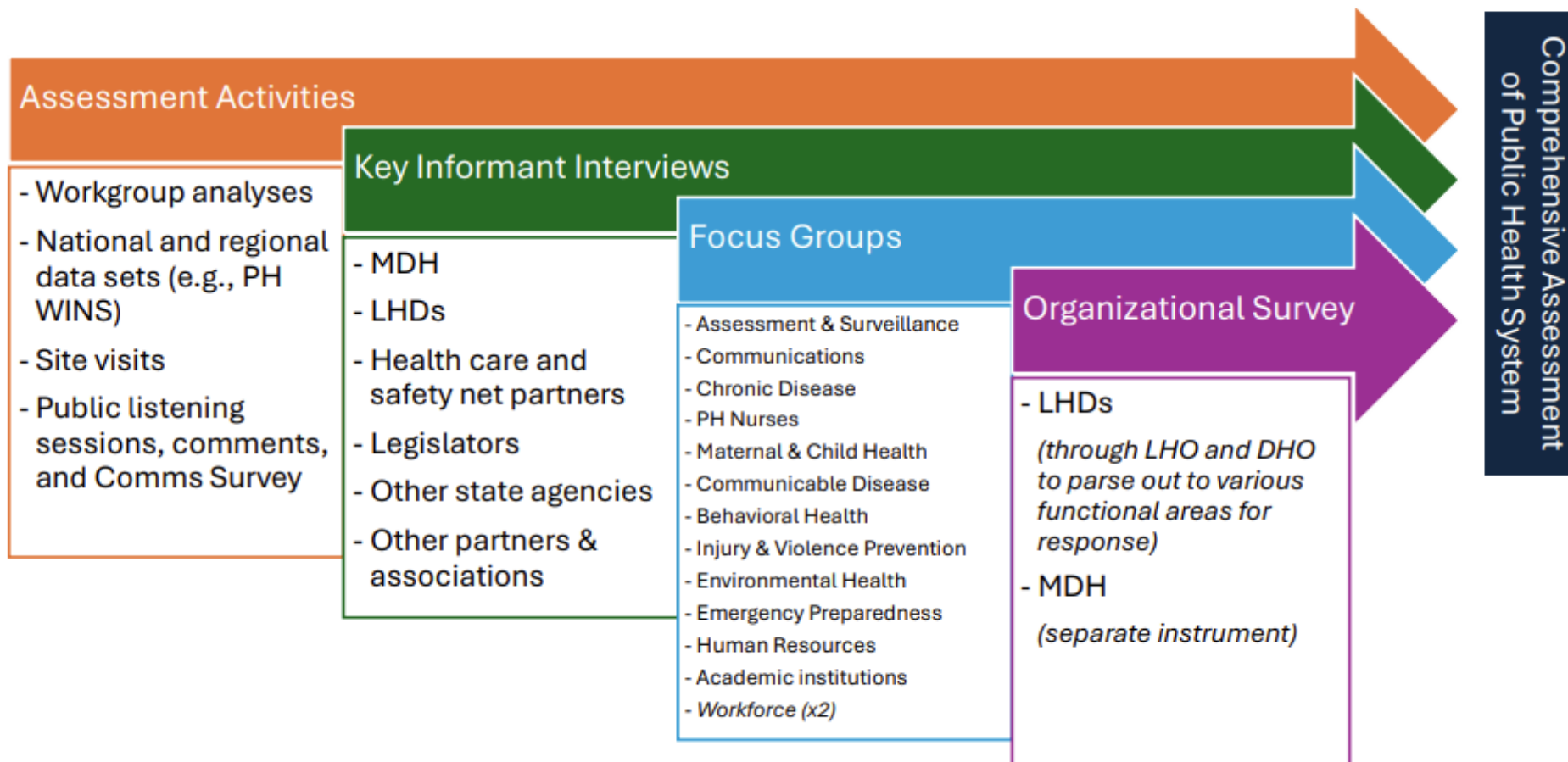
<https://health.Maryland.gov/coph/Pages/default.aspx>

LinkedIn: <https://www.linkedin.com/company/maryland-commission-on-public-health>



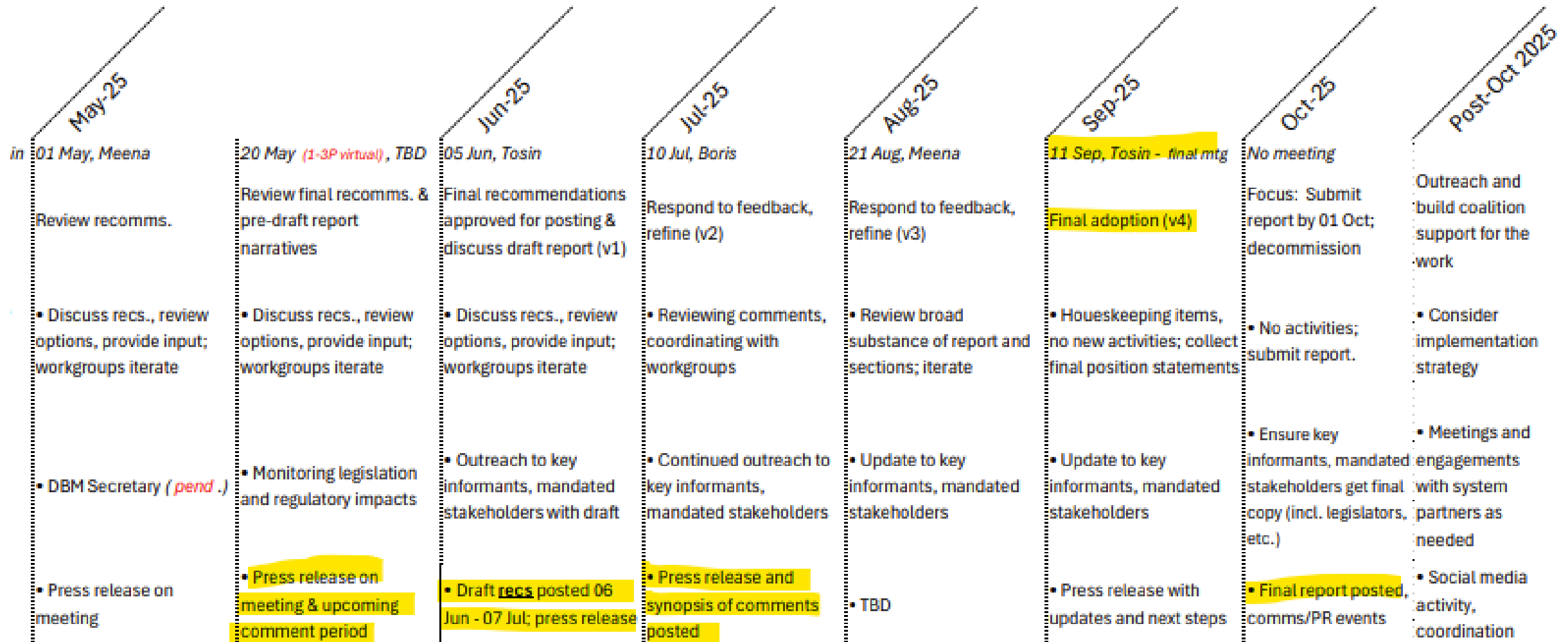
Assessment Framework

To assess MDH and LHD Foundational Public Health Capabilities with a health equity lens and make recommendations to improve Foundational Public Health Services





Timeline





Updates on Current Topics



Impact of Federal Budget Cuts

- Equity Office
- Behavioral Health
- Largely still unknown



Other program changes

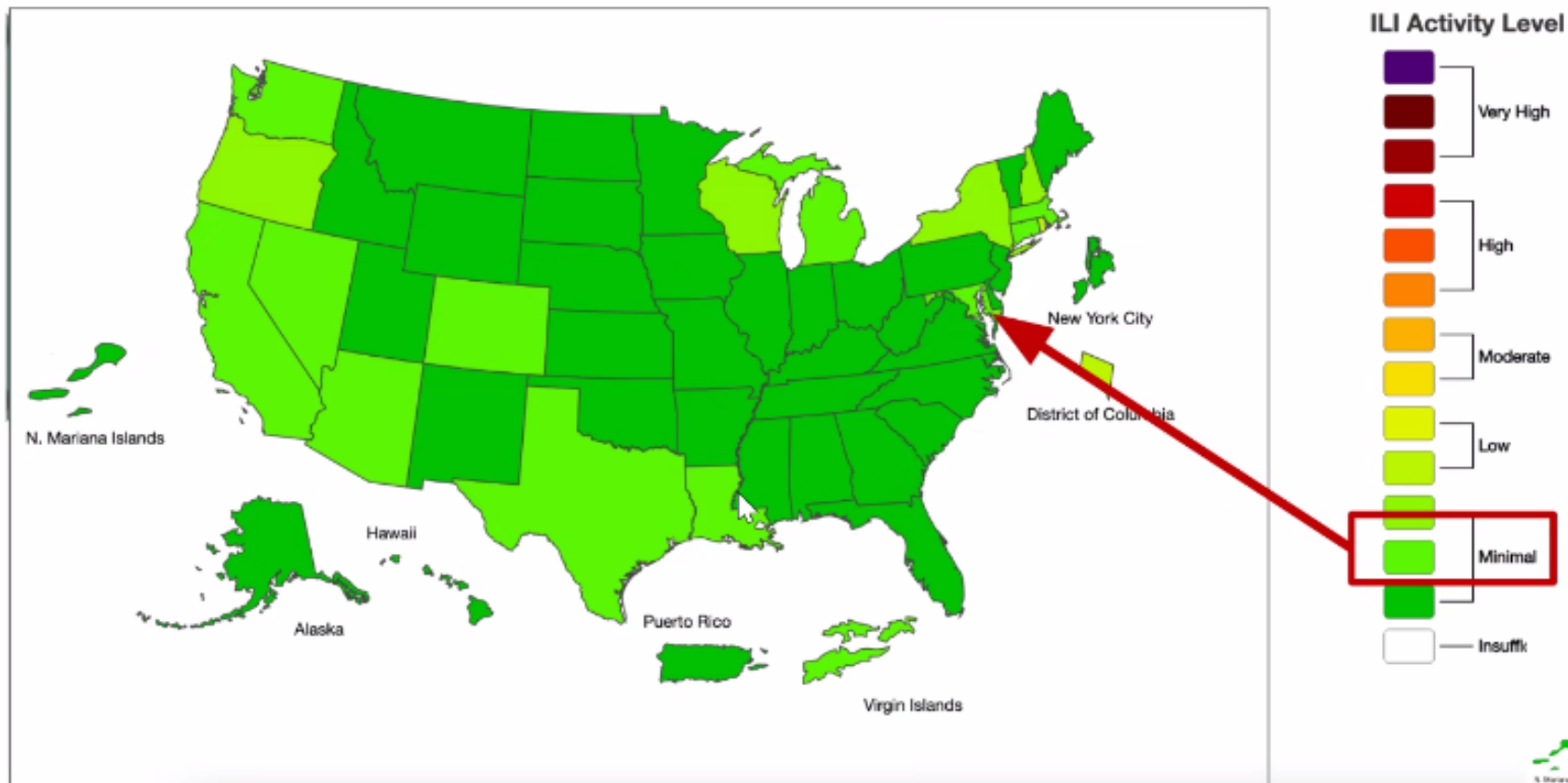
Frederick County Health Department Mental Health Services Clinic is Closing

- **Effective August 1, 2025**, the Frederick County Health Department Mental Health Services (MHS) will be closing their clinic at 350 Montevue Lane, Frederick, MD 21702 and 300 A South Seton Avenue, Emmitsburg, MD 21727.
- Clients who have questions or need help finding a new mental health provider can call 301-600-1755 to get assistance from us or go to <https://988min.org/mental-health-resources/> or <https://www.psychologytoday.com/us/therapists/md/frederick> to search online.



U.S. ILINet Activity Level

2024-25 Influenza Season Week 18 ending May 03, 2025





HPAI National Overview for Human Cases

Current situation

National situation summary

Person-to-person spread	Current public health risk
NONE There is no known person-to-person spread at this time.	LOW The current public health risk is Low.
Cases in the U.S.	Deaths in U.S.
70 cases	1 death

<https://www.cdc.gov/bird-flu/situation-summary/index.html>



Maryland HPAI Surveillance

MDH, in coordination with the Maryland Department of Agriculture and industry partners, continues collecting specimens statewide for mandatory avian influenza testing of raw milk.

- To date, the H5N1 virus has not been identified in dairy herds or milk products in the state.
- To date, no human cases have been identified in Maryland



Measles in the U.S.: Current Situation

U.S. Cases in 2025

Total cases

1001

Age

Under 5 years: **299 (30%)**

5-19 years: **376 (38%)**

20+ years: **311 (31%)**

Age unknown: **15 (1%)**

Vaccination Status

Unvaccinated or Unknown: **96%**

One MMR dose: **2%**

Two MMR doses: **2%**

U.S. Hospitalizations in 2025

13%

13% of cases hospitalized (126 of 1001).

Percent of Age Group Hospitalized

Under 5 years: **23% (69 of 299)**

5-19 years: **9% (32 of 376)**

20+ years: **7% (23 of 311)**

Age unknown: **13% (2 of 15)**

U.S. Deaths in 2025

3



Measles - Maryland

- 2025: 3 cases
- All international travel-related

Year	Confirmed Cases
2025	3
2024	1
2023	1
2022	0
2021	0
2020	0
2019	5
2018	1
2017	1



Free Narcan in Vending Machine!

Thanks to Frederick County Fire & Rescue (DFRS), we have a new addition to our building at 350 Montevue Lane! This free vending machine is available to the public when the building is open M-F 8am-5pm and contains:

- naloxone (narcan)
- fentanyl and xylazine test strips
- wound care kits
- drug disposal kits
- gun locks
- STD test kits

Other vending machine locations:
Brunswick MARC Train Station (5am-8pm).

Naloxone Boxes throughout the County

- Brunswick Branch Library
- C. Burr Artz Library
- Frederick County Adult Detention Center
- Middletown Branch Library
- Urbana Regional Library
- Thurmont Regional Library
- Walkersville Regional Library



The Health Department has also partnered with Centro Hispano, Platoon 22, Frederick County Department of Social Services, the Student Homelessness Initiative Partnership and the Econo Lodge to provide boxes to patrons of these locations.

Healthy Hearts Blood Pressure Monitoring Class

The next Healthy Hearts class starts in mid-May and will meet on Thursday evenings at the Frederick County Health Department.

Contact Colleen at 240-357-1161 for more information!

Nuestra próxima clase de Corazones Saludables para hispanohablantes comenzará en mayo y se reunirá los miércoles por la noche en el Centro Comunitario Hillcrest.

¡Póngase en contacto con Carolina, 301-835-9050, para obtener más información o para registrarse!

Looking to join our next
Healthy Hearts class for adults
with high blood pressure?

You can play an
active role in
controlling your high
blood pressure
— with the —
Healthy Hearts
program!



Enrollment is
open now!

To register,
call Colleen at
240-357-1161




¿Busca tomar el control de
su presión arterial alta?



¡La inscripción está abierta
para nuestra próxima clase
de Corazones Saludables!

Esta clase ofrece :

- Monitor de presión arterial gratuito
- Consejos para obtener lecturas precisas
- Educación nutricional
- Apoyo de un entrenador y de compañeros



Para inscribirse,
llame a Carolina al
301-835-9050



Salud Pública
Prevenir. Promocionar. Proteger.
DEPARTAMENTO DE SALUD DEL
CONDOMIO DE FREDERICK



Doula Workshop

Our Maternal Child Health Program has been awarded a grant to increase Doula training and capacity within Frederick County. We are offering FOUR Doula Training Workshops.

For more details and how to register, go to Health.FrederickCountyMD.gov/Doula or call 301-600-3326.



Maternal Child Health
FREDERICK COUNTY

DOULA WORKSHOP

Are you interested in becoming a Doula?
Unsure where to start? Can't afford the fees?

Our Certified Doulas will:

- Find the perfect class for you
- Provide fee assistance to include:
 - DONA membership
 - Class Registration
 - Certification Packet submission



Scan the QR code with your mobile device to Register for our upcoming workshop!

For more information, call 301-600-3326
or email maternalchildhealth@frederickcountymd.gov


Public Health
Protect. Promote. Prevent.
FREDERICK COUNTY
HEALTH DEPARTMENT



RABIES VACCINATION CLINIC



June 29, 2025
2pm-4:30pm

Thurmont Community Park
19 Frederick Road
Thurmont, MD 21788

- 🐾 Dogs, cats, and ferrets 3 months and older
- 🐾 \$10 per animal
- 🐾 Cash or check (no credit or debit)
- 🐾 Rain or shine!

- Sunday, June 29 from 2-4:30pm at Thurmont Community Park (19 Frederick Road, Thurmont, MD 21788)

The cost is \$10 per animal CASH OR CHECK ONLY. Any dog, cat or ferret three months or older is eligible. The events will take place rain or shine.



Remembering Love & Restoring Hope

All who have lost a loved one to overdose is invited to participate in an event to be held in August to honor those lives lost. Anyone interested in having their loved one be included in the event can submit information here with this QR code.



Submissions will be accepted through July 18, 2025.

The event will be held on August 27, 2025 at 7pm at the JBK Theater at Frederick Community College.

Frederick County Health Department invites you to

Remembering Love & Restoring Hope

an event to honor the lives lost to overdose and provide support to family and friends left behind.



Event Details

August 27, 2025

7:00 PM

Frederick Community

College JBK Theater

7932 Opossumtown Pike

Frederick, MD 21702





Old Business



Update on Liaisons cycling off and
applications for new positions
by
Dr. Barbara Brookmyer



Liaison Positions – Purpose & Positions

Purpose: Liaisons shall serve as a resource, provide information and data, and answer questions as needed or requested by the Board of Health.

The Board shall appoint the following 6 liaisons:

- ☐ An epidemiologist
- ☐ A nurse
- ☐ A mental health professional
- ☐ A veterinarian
- ☐ A member from the Frederick Chamber of Commerce, and
- ☐ One (1) person with a science related background



Liaison Positions – Overview

- Liaisons shall be appointed and confirmed by a majority of the Board of Health
- Liaisons shall have no voting privileges, and will not be counted in determining the presence of a quorum
- Liaisons will serve without compensation.
- Liaisons may be reappointed but may not serve more than 2 full consecutive 3-year terms.
- Vacancies shall be filled on the same basis as the original appointments for unexpired terms and shall be filled with a person of the same or similar background of the liaisons being replaced.
- Liaisons shall continue in office until their successors are appointed and qualified.



Liaison Positions – Appointment Terms

- 6 liaisons appointed in 2023
 - 2 initially appointed for a term that expired in 1 year (2024)
 - Nurse and Science Related background
 - Current term through June 2027
 - 2 initially appointed for a term that expires in June 2025
 - Chamber of Commerce and Mental Health Professional
 - 2 initially appointed for a term that expires in June 2026
 - Epidemiologist and Veterinarian
- With the exception of some of the initial appointments, the term of office of each of the members shall be for a period of three (3) years.



Proposed Timeline for Recruitment and Selection

- May 19 - Announce the recruitment, media release, BoH webpage, e-mail, social media
- June 20 - Due date for submission of applications
- June-July - Review of applications
- July 30 - Meeting for BoH members to vote on recommended applicants



BoH Website

FrederickCountyMD.gov/BoardofHealth

Board of Health

Maryland law establishes a Board of Health in each county. The local Board may adopt and enforce rules and regulations on any nuisance or cause of disease in the county as long as these are not contrary to and are at least as stringent as existing State laws, rules and regulations. The membership of the Board of Health consists of the seven County Council members and the County Executive. The County Health Officer is the executive officer and secretary of the Board of Health. The Board of Health follows these [Rules of Procedure](#).

Upcoming Board of Health meeting(s):

- May 15, 2025 at 6pm
- July 30, 2025 at 6pm
- October 22, 2025 at 6pm
- Meeting location: 1st floor hearing room of Winchester Hall (12 East Church St. Frederick, MD 21701)
- *If you need accommodations to attend this meeting, please email boardofhealth@frederickcountymd.gov or text (301) 900-5811.

Board of Health's meetings can be listened to by phone while the meeting is occurring by calling 855-925-2801 and entering meeting code 8751.

Past meetings can be viewed in the [video archives](#) under "Other Boards and Commissions".

Email boardofhealth@frederickcountymd.gov or text (301) 900-5811 for assistance.

Liaisons

Legislation from the County Council establishes a new liaison role for the Board of Health (see [April 18, 2023 County Council meeting](#) at 56 minutes).

For fiscal year 2025 (July 2024 - June 2025), the following liaisons are active:

1. Chamber of Commerce member – Dr. Diana P. Castiblanco (term through June 2025)
2. Mental health professional - Dr. Alison Bomba (term through June 2025)
3. Epidemiologist – Dr. René F. Najera (term through June 2026)
4. Veterinarian – Dr. Michael E Schaden (term through June 2026)
5. Nurse – Dr. Jennifer Cooper (term through June 2027)
6. Science related background – Dr. Scott Stanley (term through June 2027)

Liaisons will serve for varying periods of time initially based on the number of applications received for each category in the first round of applications in 2023. After this first set of terms, all terms will be for 3 years.

- Mental health professional and Chamber of Commerce member: 2-year term starting July 2023
- Veterinarian and epidemiologist: 3-year term starting July 2023



New Business



Environmental Health Cost of Service Adjustment

Schedule:

- May 15 meeting
 - introduction of proposed Cost of Service Adjustment
- July 30 meeting
 - public hearing
 - Board member vote



Mandated Environmental Health Services

- Percolation testing for subdivisions and individual lots
- Septic Permits
- Co-review with MDE for large flows MDE permit
- Well Permits
- Well Abandonments
- Building permits
- Subdivision plat review
- Transient Non-Community Water Systems
- Food Service Facilities
- Temporary Food Service and Mobile Units
- Liquid Waste Haulers
- Rabies and Vector investigations and complaints
- Building Permit review
- Air Quality - Open burning (complaints/permits)
- Pool Inspections
- Public Bathing Beach Permits
- Camps, Mobile Home Parks, Exotic Bird Permits
- Sewage Overflows
- Complaints about well, septic, nuisances, food
- Day Cares/Adoptions served by individual wells
- Requests for information (2,316 rec'd in FY24)



Environmental Health Services with no fee

- **Food Complaint Investigations: 234** (includes Clean Indoor Air Act and Styrofoam).
- **Nuisance Investigations: 55** (resulting in over 127 inspections, letters and other responses).
- **Rabies Prevention: 1,031** (170 investigations, 567 bite reviews, 33 positive cases, 261 samples shipped)
- **FOIA Information requests: 62**
- **Well and Septic Information Requests: 2,316**
- **Certificates of Potability: 99**
- **Notary**
- **Consultations (food service, builders, businesses, homeowners)**



Reason for Proposed Changes

- Fees have not been increased since 2009
- Expenses have increased 83% from FY09 to FY25:
 - Union negotiated pay raises and licensure fee reimbursement, not always funded by State
 - There have been on occasion a one-time supplement often made available in the last quarter of the fiscal year.
 - Cost of fleet vehicles has increased due to increases in gas and replacement vehicles.
 - Addition of cell phones for all field staff
 - Need for more staff trainings due to increased complexity of regulations and technology

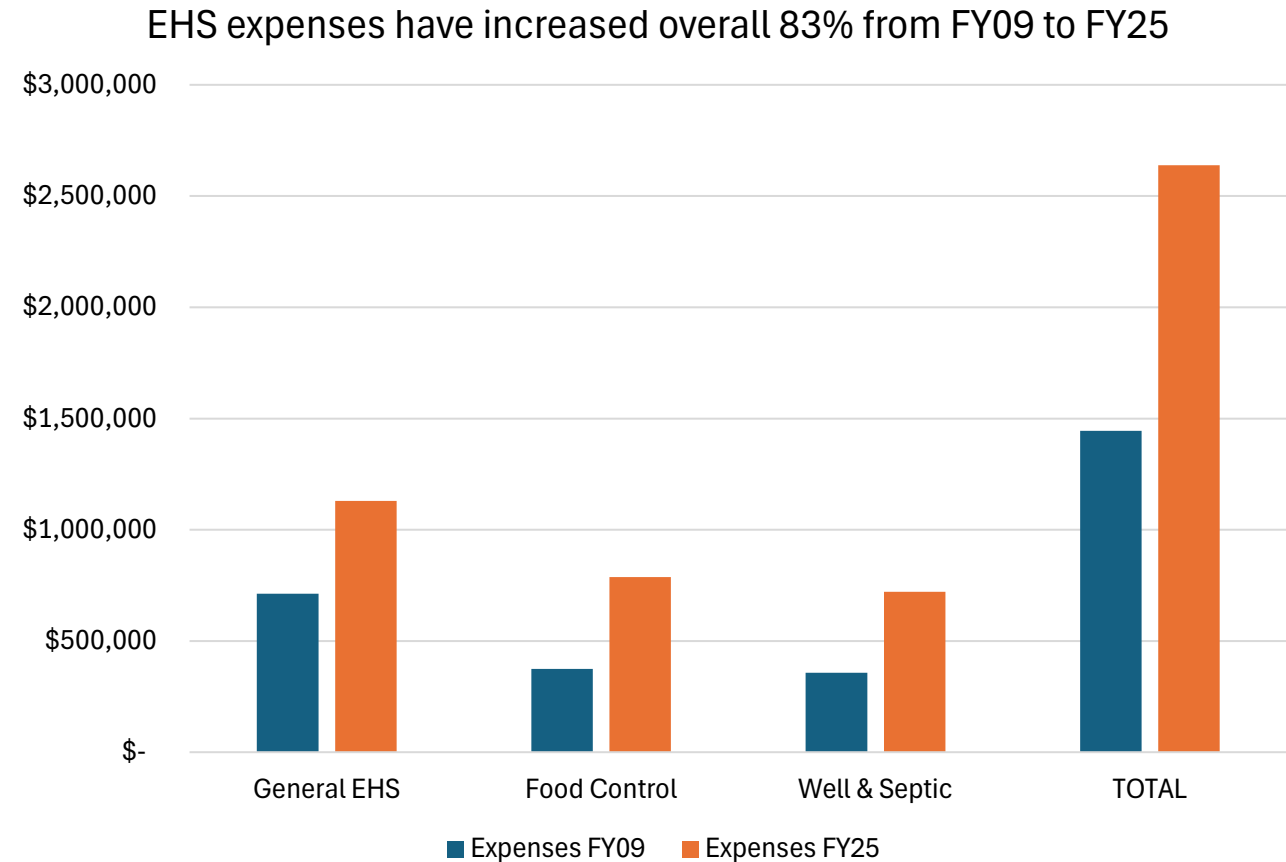
Overall staffing has remained relatively consistent while population increase has led to increase in demand for services

- 20 FTEs in FY09
- 21.5 FTEs in FY25



Environmental Health Fee Schedule: Expenses in FY09 – FY25

	Expenses FY09	Expenses FY25	Increase
General EHS	\$712,959	\$1,129,048	58%
Food Control	\$374,719	\$787,898	110%
Well & Septic	\$356,426	\$721,406	102%
TOTAL	\$1,444,104	\$2,638,352	83%



Based on inflation our fees should have increased 47%.

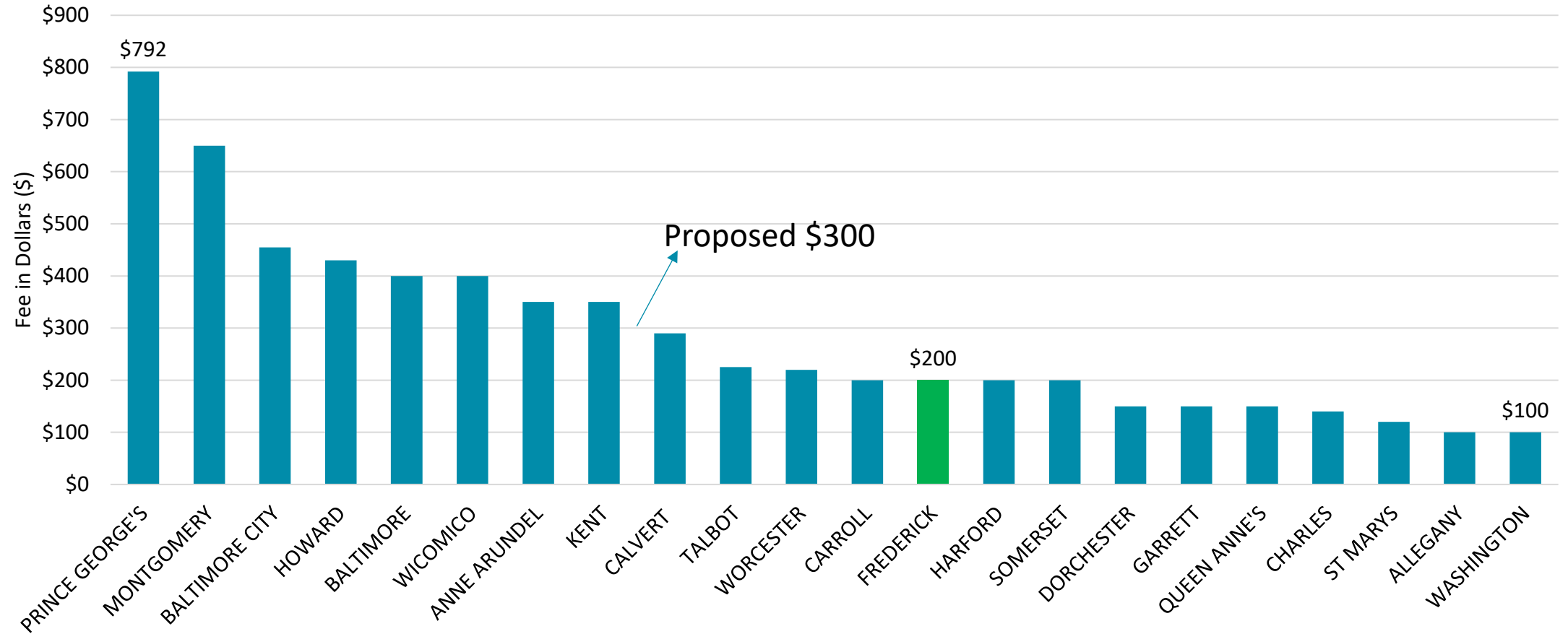
Consumer Price Index, All Items, 12- month percent change





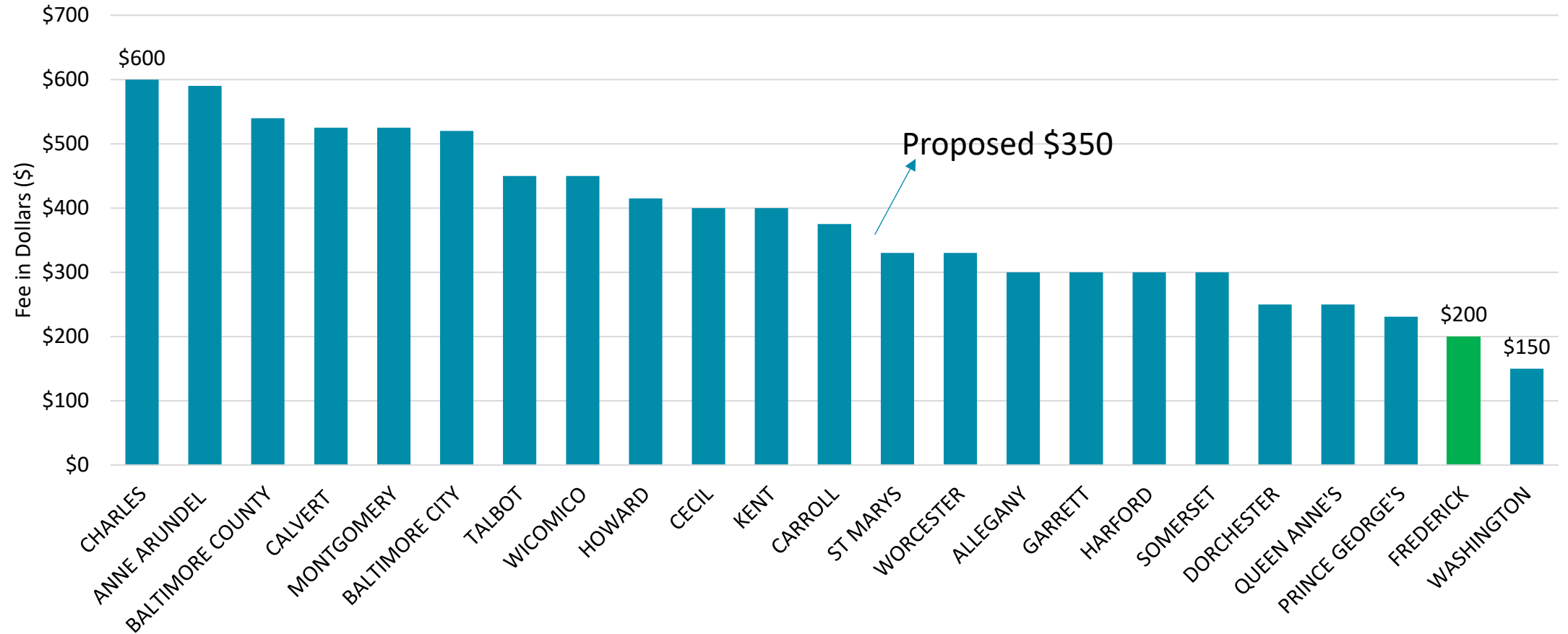
Frederick Fees Compared to Other MD Counties

Fee for Seasonal Swimming Pool Inspection/Permit by Maryland County



Green bar shows current FY25 fee for Frederick County.

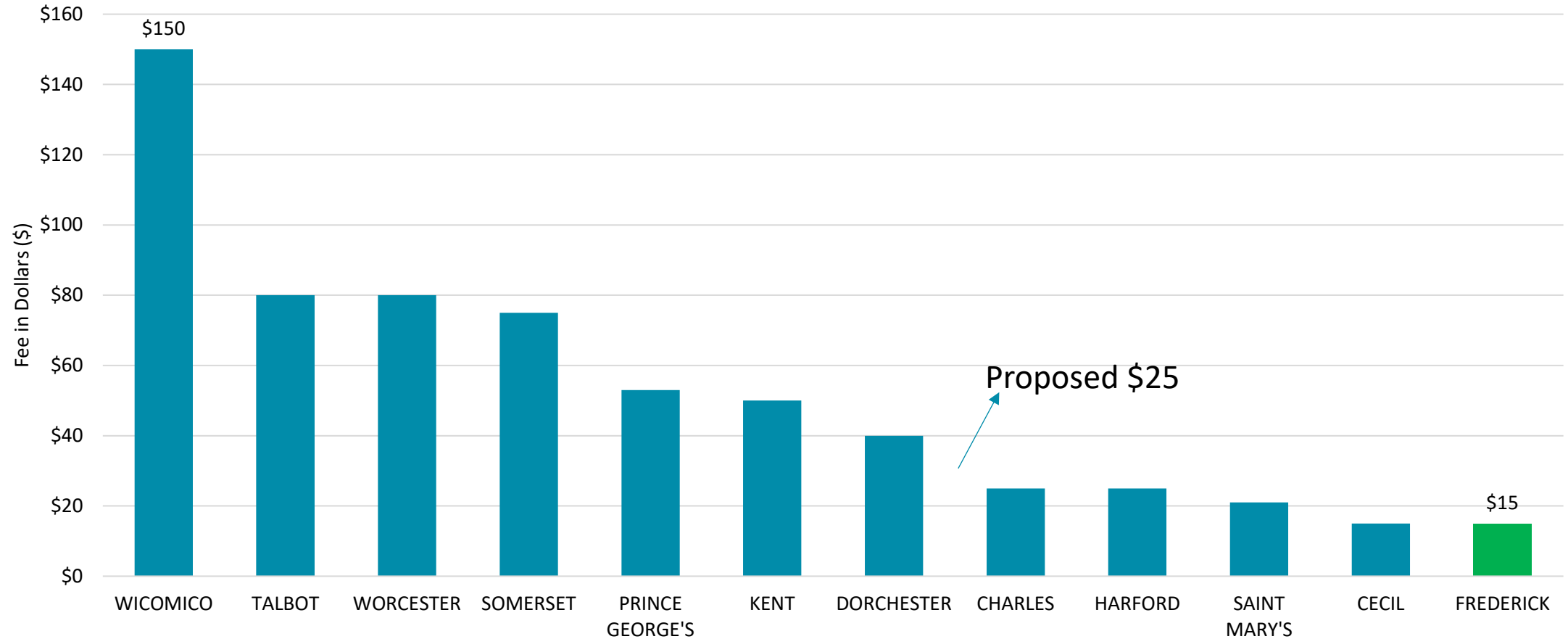
Fee for High Priority Food Inspection/License by Maryland County



Green bar shows current FY25 fee for Frederick County.

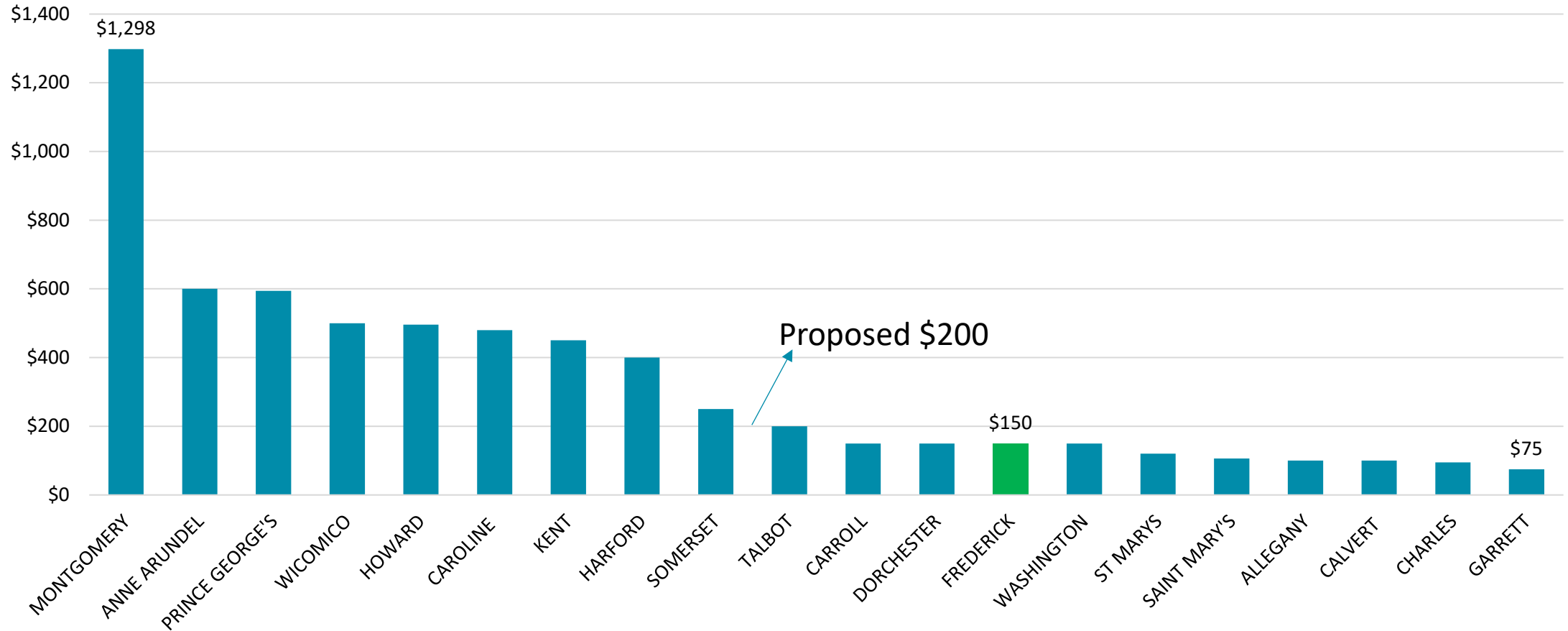


Fee for Residential Burn Permit by Maryland County



Green bar shows current FY25 fee for Frederick County.

Fee for New Septic System Installation by Maryland County



Green bar shows current FY25 fee for Frederick County.



Highlights of Proposed Cost of Service Adjustment

	Current FC Fee	Proposed FC Fee	% Increase
Residential Burn Permit	\$15	\$25	66%
Food Facility (high priority)	\$200	\$350	75%
Swimming Pool Inspection	\$200	\$300	50%
New Septic System	\$150	\$200	20%

Expenses have increased overall 83%.

Based on inflation our fees should have increased 47%.

Handout provides list of current and proposed fees.

Frederick County Health Department Environmental Health

2025 Proposed Fee Schedule

Service	Fee	2025 Proposed Fee
Community Services		
Open Burn Permit	\$15	\$25
Large Commercial burns	\$50	\$25
Exotic Bird Permit	\$50	\$100
Mobile home Permit per mobile home spot	\$10	\$20
Bathing Beach Permit	\$200	\$200
Main Swimming Pool Permit	\$200	\$300
Baby Pool Permit	\$100	\$300
Spa Permit	\$150	\$300
Pool Op Card	\$15	\$20
Op Card Replacement	\$10	\$20
Sanitary Survey for foster adoption	\$25	\$30
Water Well Testing minus lab fees	\$40	\$50
Building/Zoning Certificate Review	\$50	\$75
Sketch/Concept Plan Review (add \$50 per lot)	\$75	\$75
Site Plan for Perc Testing Review (add \$50 per lot)	\$125	\$200
Preliminary Plat (add \$25 per lot)	\$100	\$150
Combined Final Prelim Plat (add \$25 per lot)	\$150	\$200
Final Plat, City/ Town Plat or Court Action Plat	\$100	\$250
Addition, Corr., Public Taking Plat	\$75	\$150
Ag Res Cluster, Sketch Concept	\$75	\$150
Site Plans Phase V - New or Rev.	\$75	\$100
DIPDR Eng. Items- Site/Sub/Minor Imp. Plans	\$75	\$100
Animal Rabies Vaccination	\$15	\$15
Food Services		
Food Service Facility High	\$200	\$350
Food Service Facility Medium	\$200	\$250
Food Service Low	\$75	\$145
Food Service Late Fee	\$50	\$50
Farmer's Market Sampling License	\$75	\$75
Food Service Facility Plan Review	\$100	\$200
Food Service HACCP Plan Review	\$75	\$100
Temporary Food Permit	\$25	\$50
Temporary Permit Late Fee	\$10	\$45
Well & Septic		
Well Permit	\$160	\$160
Septic System New - Conventional	\$150	\$200
Septic System New - Sand Mound/ Alternative	\$250	\$300
Septic System Repair	\$30	\$60
Soil Evaluation and Testing:		
10K or less	\$225	\$325
10 K to 12.5 K	\$275	\$375
12.5 K to 15K	\$325	\$425
15K to 17.5K	\$375	\$450
17.5 K to 20K	\$425	\$500
Liquid Waste Hauler	\$55	\$100
Revaluation for soil description	\$30	\$50
Reinspection Fee - All Programs	\$50	\$75



Community Services

Service	Current Fee	Proposed Fee
Open Burn Permit	\$15	\$25
Large Commercial burns	\$50	\$25
Exotic Bird Permit	\$50	\$100
Mobile home Permit per mobile home spot	\$10	\$20
Bathing Beach Permit	\$200	\$200
Main Swimming Pool Permit	\$200	\$300
Baby Pool Permit	\$100	\$300
Spa Permit	\$150	\$300
Pool Op Card	\$15	\$20
Op Card Replacement	\$10	\$20
Sanitary Survey for foster adoption	\$25	\$30
Water Well Testing minus lab fees	\$40	\$50



Community Services, continued

Service	Current Fee	Proposed Fee
Building/Zoning Certificate Review	\$50	\$75
Sketch/Concept Plan Review (add \$50 per lot)	\$75	\$75
Site Plan for Perc Testing Review (add \$50 per lot)	\$125	\$200
Preliminary Plat (add \$25 per lot)	\$100	\$150
Combined Final Prelim Plat (add \$25 per lot)	\$150	\$200
Final Plat, City/ Town Plat or Court Action Plat	\$100	\$250
Addition, Corr., Public Taking Plat	\$75	\$150
Ag Res Cluster, Sketch Concept	\$75	\$150
Site Plans Phase V - New or Rev.	\$75	\$100
DIPDR Eng. Items- Site/Sub/Minor Imp. Plans	\$75	\$100
Animal Rabies Vaccination	\$15	\$15



Food Services

Service	Current Fee	Proposed Fee
Food Service Facility High	\$200	\$350
Food Service Facility Medium	\$200	\$250
Food Service Low	\$75	\$145
Food Service Late Fee	\$50	\$50
Farmer's Market Sampling License	\$75	\$75
Food Service Facility Plan Review	\$100	\$200
Food Service HACCP Plan Review	\$75	\$100
Temporary Food Permit	\$25	\$50
Temporary Permit Late Fee	\$10	\$45



Well & Septic Services

Service	Current Fee	Proposed Fee
Well Permit	\$160	\$160
Septic System New - Conventional	\$150	\$200
Septic System New - Sand Mound/ Alternative	\$250	\$300
Septic System Repair	\$30	\$60
Soil Evaluation and Testing:		
10K or less	\$225	\$325
10 K to 12.5 K	\$275	\$375
12.5 K to 15K	\$325	\$425
15K to 17.5K	\$375	\$450
17.5 K to 20K	\$425	\$500
Liquid Waste Hauler	\$55	\$100
Revaluation for soil description	\$30	\$50



Environmental Health Cost of Service Adjustment

Schedule:

- May 15 meeting
 - introduction of proposed Cost of Service Adjustment
- July 30 meeting
 - public hearing
 - Board vote



Frederick County Board of Health

May 15, 2025

- I. **Call to Order (6pm)** – Dr. Barbara Brookmyer, Health Officer for Frederick County
- II. **Public Comments (6:00p.m. – 6:15 p.m. p.m.)**
 - I. **Members of the public will be given three (3) minutes to provide comments** - available to attendees in the room.
- III. **Approval of Minutes:** [10/30/2024](#)
- IV. **Updates from the Health Department:**
 - I. **Maternal and Infant Health in Frederick County**
 - II. **New Community Health Needs Assessment Cycle**
 - III. **Brief report on the Maryland Commission on Public Health**
 - IV. **Current Topics**
- V. **Old Business:**
 - I. **Update on Liaison terms and application process for new**
- VI. **New Business**
 - I. **Introduce Environmental Health Cost of Service Adjustment**
- VII. **Upcoming Meetings:** July 30, 2025; October 22, 2025
- VIII. **Adjourn**